

# AD-15-V-100-015



Evaporative cooler with bottom air outlet

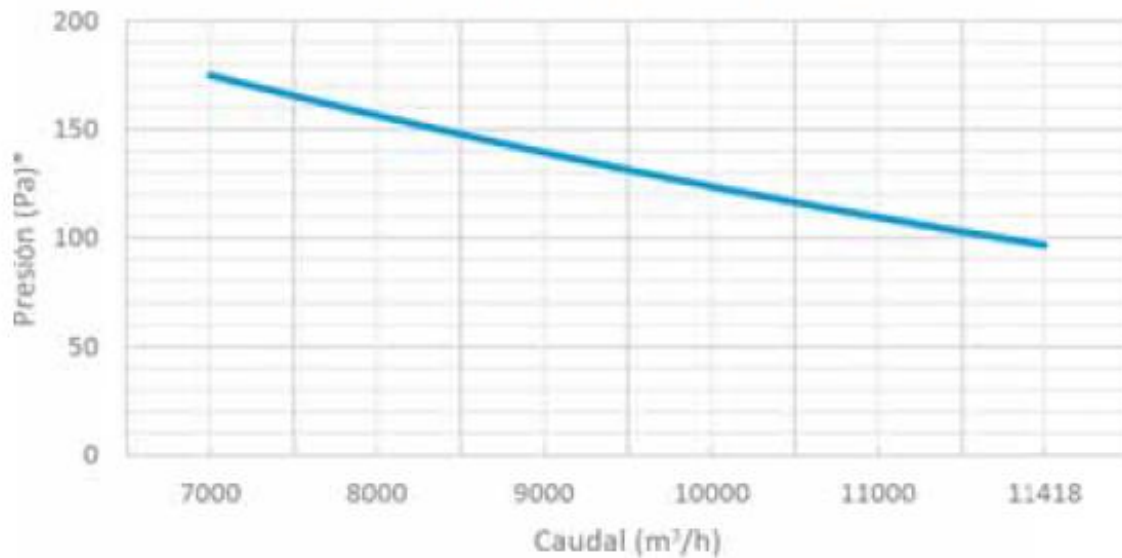
	DESCRIPTION	UNITS	DATA
AIR FLOW	Air flow	m <sup>3</sup> /h	11.418
	Available static pressure	Pa	108
ENGINE	Rated power	kW	1,50
	Nominal consumption	A	3,48 A (400V III) 6,34 A (220V III)
	Speeds	Units	1 speed / frequency inverter
	Tension	V/Phases/Hz	400/III/50 Hz
	Regulation type	-	1 speed / frequency inverter
FAN	Typo	-	Centrifuge
	Diameter	mm	-
	Speed	Rpm	514 (PM-100 PV-280)
	Drive belts	Units	1 x XPZ 1520
PUMP	Model	-	EBM ALPHA 45/15
	Power / Nominal consumption	-	50 W / 0,17 A
	Flow (2m height)	l/m	25
	Tension	V/Phases/Hz	230/I/50
	Level switch	-	Optional
COOLING	Panel type	-	5090
	Dimensions	mm	790x900x100
	Quantity	Units	4
	Total panel surface	m <sup>2</sup>	2,84
	Panel air speed	m/s	1,11
	Panel efficiency	%	89
	Temperature impulsión (40°C – 30% HR)	°C	26,7 °C
Pre filter G4	-	Optional	
SOUND LEVEL	Sound level	dB (A) 3m	60
CONNECTIONS	Inlet solenoid valve	Inches	½"
	Water evacuation	Inches	1 ¼"
	Overflow	Inches	1"
CLEANING SYSTEM	Automatic emptying	-	Yes
	UV lamp	-	Optional
CONTROL TYPE	Electric panel 1 speed	-	Optional
	Electric panel with frequency inverter	-	Optional
DIMENSIONS	Overall dimensions	Width/Length/Height	1135x1135x1270mm
	Mouthpiece connexion dimensions	Width/length	560x485mm
	Empty weight / operating	Kg	184 / 204
CERTIFICATES			CE

# AD-15-V-100-015

Evaporative cooler with bottom air outlet



Prestaciones AD-15 (1,5 kW)



## Standard design details

- Water tray made of polyamide
- Corner and central posts in stainless steel AISI-304
- Upper roof made of polyamide
- Inlet and outlet side grids in galvanised steel with polyester powder coating (INOX version in AISI-304)
- Cooling panels type 5090 of 100mm thick
- Galvanised steel centrifugal fan unit
- Automatic draining system patented by MET MANN
- SCHAEFFLER CORROTECT corrosion-resistant bearings with protective caps
- Maintenance-free QUAD-POWER4 power transmission belts from GATES
- EBM ALPHA 45/15 EBM water pump with external rotor motor
- High efficiency electric motor IE3 IP 55
- Normally closed inlet solenoid valve
- Half-turn opening system for access to the inside of the unit
- Base stand with legs supplied as standard for ease of transport and installation

## Custom manufacturing

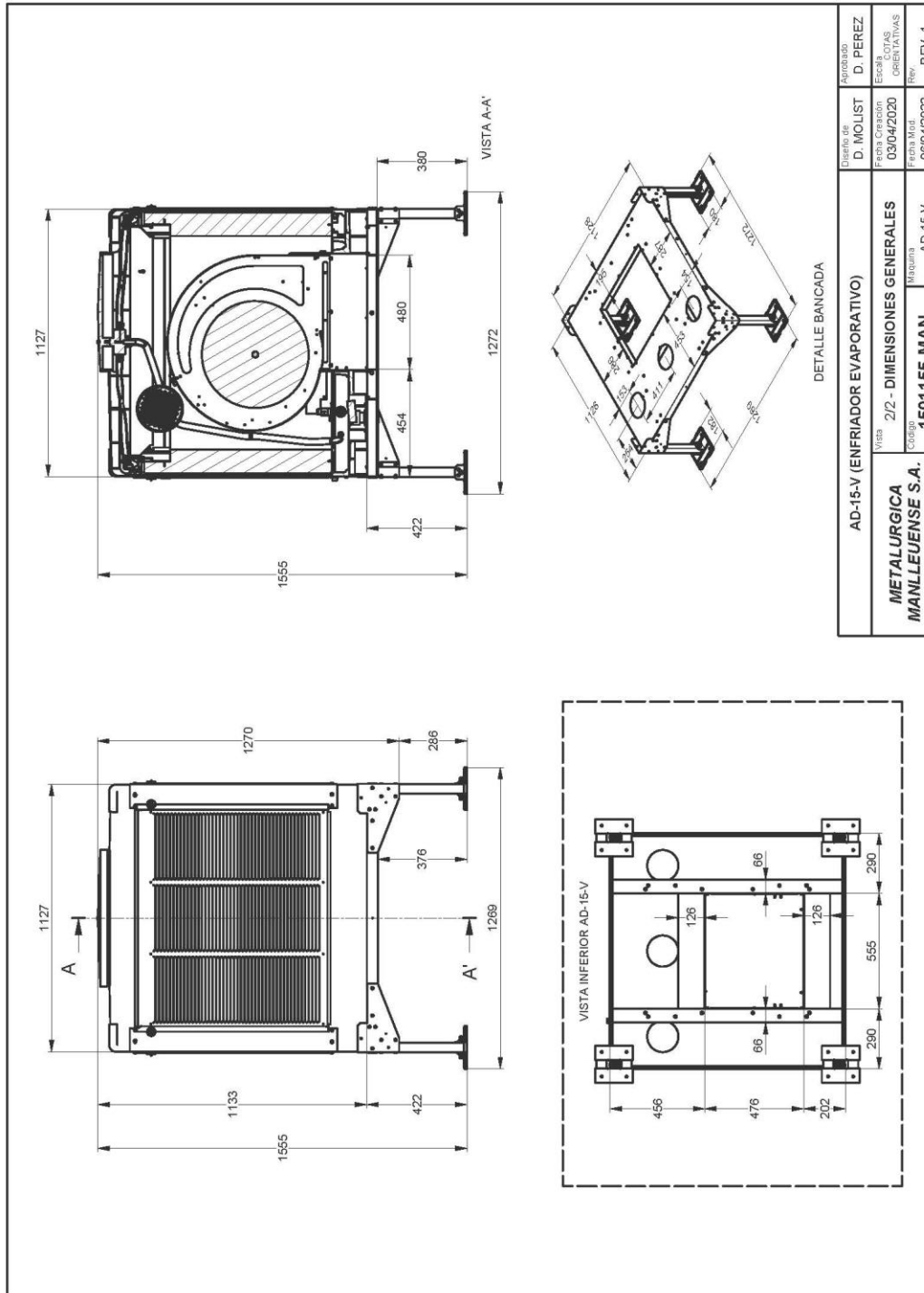
- Air filtration to comply with BRC food standards
- Customized air flows and pressures
- ATEX motors for explosive environments, etc..

# AD-15-V-100-015

Evaporative cooler with bottom air outlet



## Overall dimensions

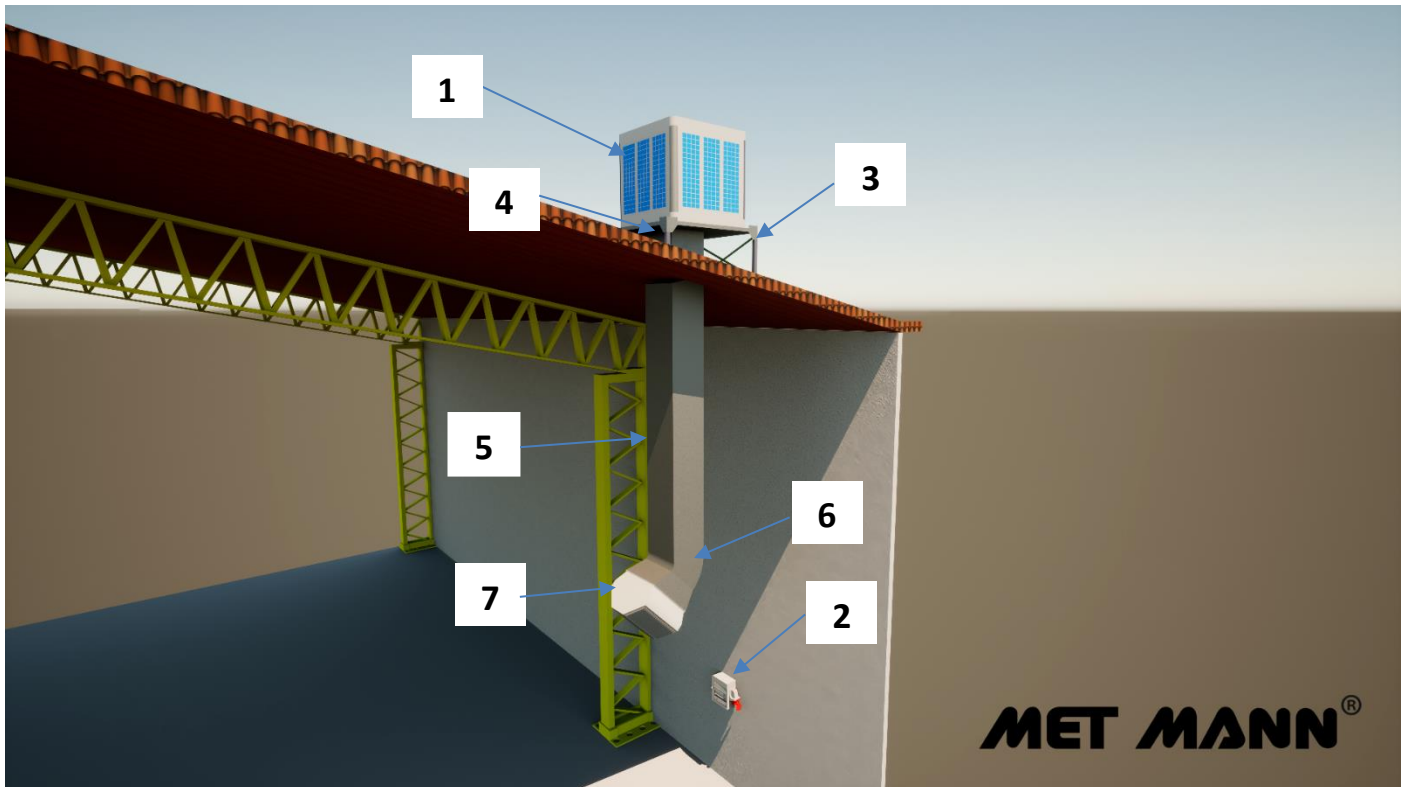


# AD-15-V-100-015

Evaporative cooler with bottom air outlet



## Installation on roof with diffuser 3 outputs



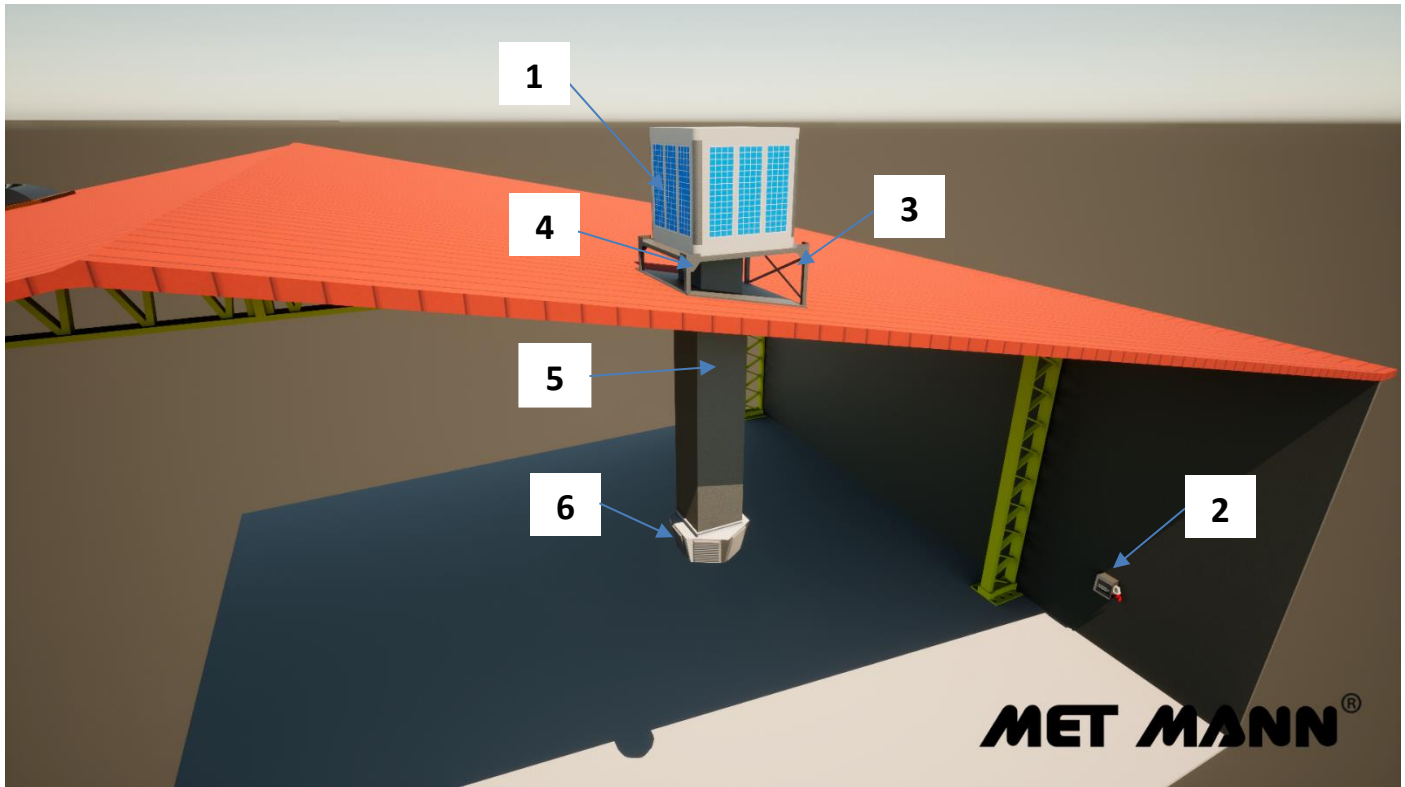
POSITION	DESCRIPTION	UNITS	STANDARD	INOX
01	Evaporative cooler AD-15-V-100-015	1	15011551015S	15011551015I
02	Electric panel 1 speed / frequency inverter	1	0415CMS015400	0415CF015400
03	Base stand support KBT-15	1	03091501022	
04	Flexible joint JE-600 (600x600)	1	1805AV6060	
05	Straight section TR-600 (600x600x1000)	1	1805TR600	
06	Curved section TC-600 45° or 90° (600x600)	1	-	
07	3-way air diffuser DCH-3-15	1	0323150115301	
-	Pre filter PG4-15	4	04150115G412	04150115G412I
-	UV WATER treatment	1	031501101010M	
-	Protective case FU-15-V	1	03021502009	

# AD-15-V-100-015

Evaporative cooler with bottom air outlet



## Installation on roof with diffuser 6 outputs



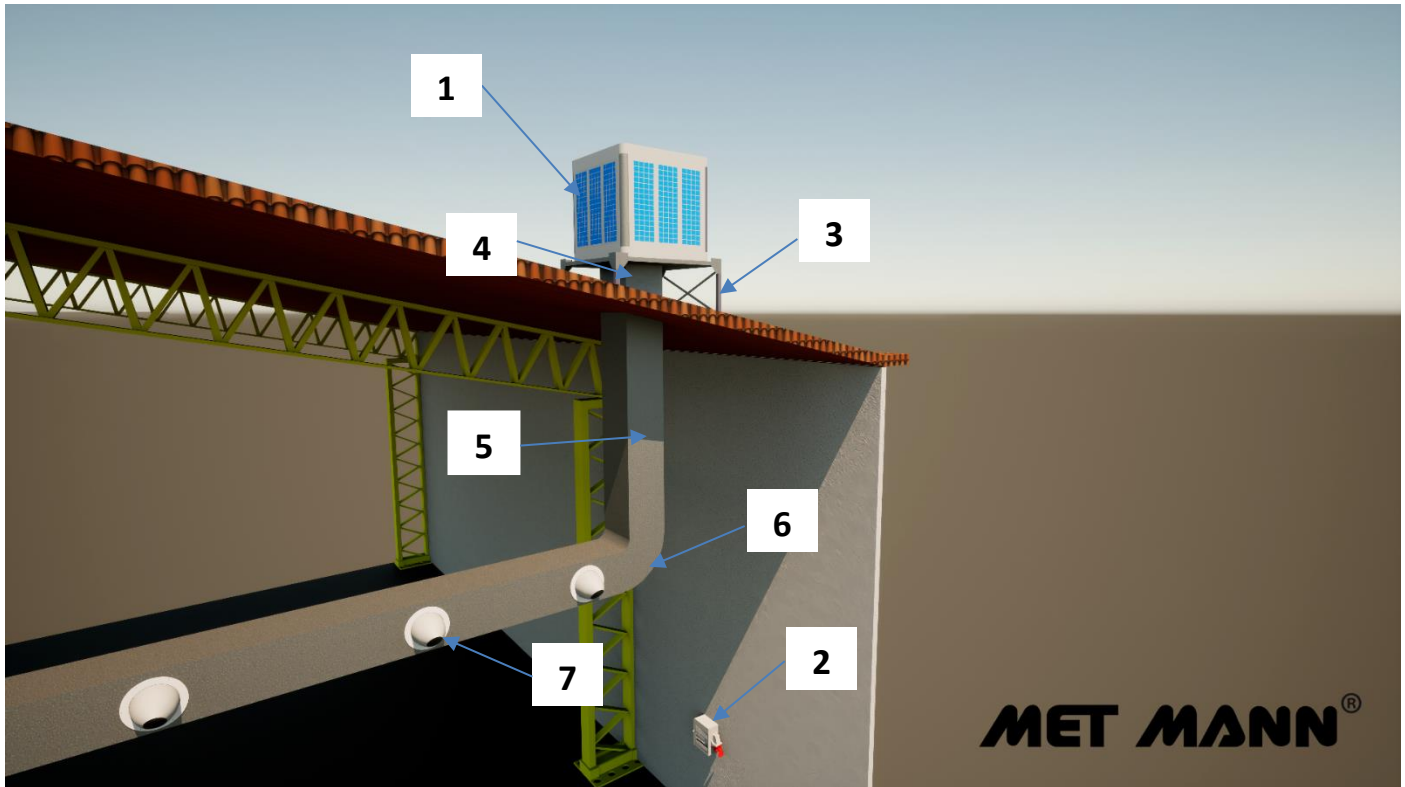
POSITION	DESCRIPTION	UNITS	STANDARD	INOX
01	Evaporative cooler AD-15-V-100-015	1	15011551015S	15011551015I
02	Electric panel 1 speed / frequency inverter	1	0415CMS015400	0415CF015400
03	Base stand support KBT-15	1	03091501022	
04	Flexible joint JE-600 (600x600)	1	1805AV6060	
05	Straight section TR-600 (600x600x1000)	1	1805TR600	
06	6-way air diffuser DCH-6-15	1	0323150115601	
-	Pre filter PG4-15	4	04150115G412	04150115G412I
-	UV WATER treatment	1	031501101010M	
-	Protective case FU-15-V	1	03021502009	

# AD-15-V-100-015

Evaporative cooler with bottom air outlet



## Installation on roof with impulsion nozzles



POSITION	DESCRIPTION	UNITS	STANDARD	INOX
01	Evaporative cooler AD-15-V-100-015	1	15011551015S	15011551015I
02	Electric panel 1 speed / frequency inverter	1	0415CMS015400	0415CF015400
03	Base stand support KBT-15	1	03091501022	
04	Flexible joint JE-600 (600x600)	1	1805AV6060	
05	Straight section TR-600 (600x600x1000)	1	1805TR600	
06	Curved section 90° TC-600 (600x600)	1	1805TC600	
07	High induction nozzles CI-300	1	04150PAKCONO	
-	Pre filter PG4-15	4	04150115G412	04150115G412I
-	UV WATER treatment	1	031501101010M	
-	Protective case FU-15-V	1	03021502009	

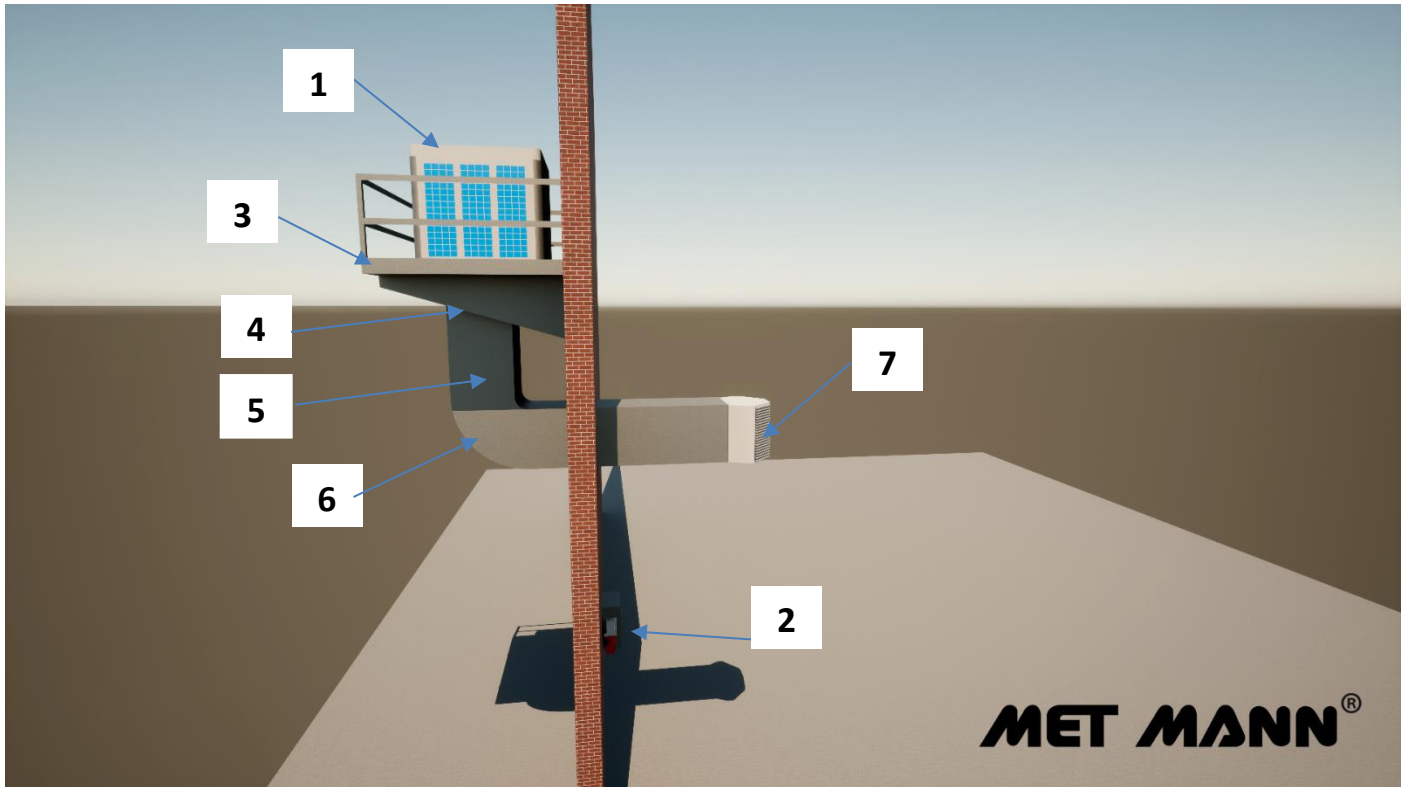


# AD-15-V-100-015

Evaporative cooler with bottom air outlet



## Wall installation with diffuser 3 outputs



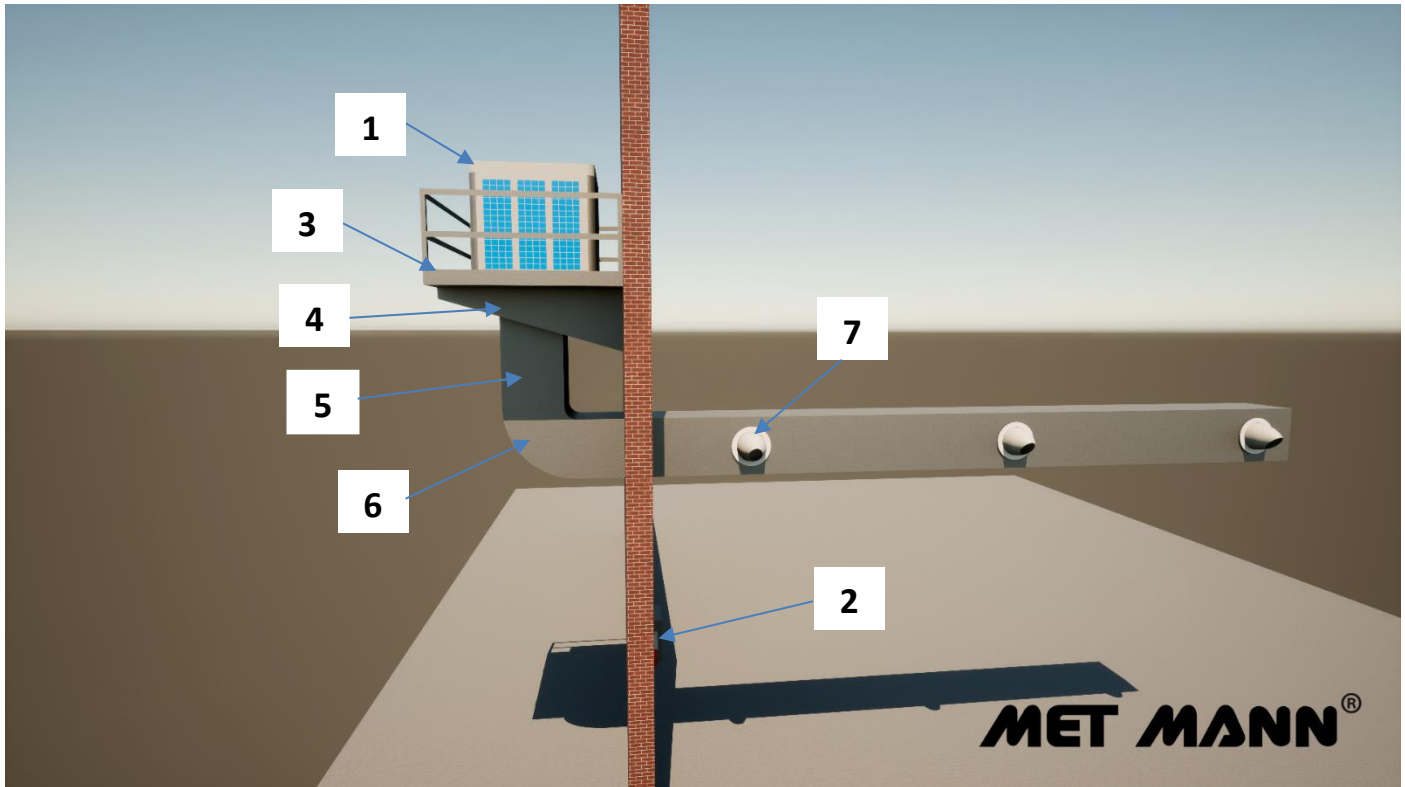
POSITION	DESCRIPTION	UNITS	STANDARD	INOX
01	Evaporative cooler AD-15-V-100-015	1	15011551015S	15011551015I
02	Electric panel 1 speed / frequency inverter	1	0415CMS015400	0415CF015400
03	Base stand support KBM-15	1	03091501024	
04	Flexible joint JE-600 (600x600)	1	1805AV6060	
05	Straight section TR-600 (600x600x1000)	1	1805TR600	
06	Curved section 90° TC-600 (600x600)	1	1805TC600	
07	3-way air diffuser DCH-3-15	1	0323150115301	
-	Pre filter PG4-15	6	04150115G412	04150115G412I
-	UV WATER treatment	1	031501101010M	
-	Protective case FU-15-V	1	03021502009	

# AD-15-V-100-015

Evaporative cooler with bottom air outlet



## Wall installation with impulsion nozzles



POSITION	DESCRIPTION	UNITS	STANDARD	INOX
01	Evaporative cooler AD-15-V-100-015	1	15011551015S	15011551015I
02	Electric panel 1 speed / frequency inverter	1	0415CMS015400	0415CF015400
03	Base stand support KBM-15	1	03091501024	
04	Flexible joint JE-600 (600x600)	1	1805AV6060	
05	Straight section TR-600 (600x600x1000)	1	1805TR600	
06	Curved section 90° TC-600 (600x600)	1	1805TC600	
07	High induction nozzles CI-300	1	04150PAKCONO	
-	Pre filter PG4-15	6	04150115G412	04150115G412I
-	UV WATER treatment	1	031501101010M	
-	Protective case FU-15-V	1	03021502009	